



The Supply Chain Sustainability School: *Collaborating for Sustainability*

IPAF, 18th Nov 2021

James Cadman, Action Sustainability

- **Who's heard of the School?**
- **Background to the School and our mission**
- **How the School can help**
- **The School's Groups: Plant, and Carbon**



Our mission

“To be the world class collaboration to enable
a more sustainable built environment”

The School is a common approach to...

1. Assessing supply chain sustainability competence
2. Developing suppliers' sustainability knowledge



17,000+ companies

60,000+ individual learners

140+ Partners leading our Work

<https://www.supplychainschool.co.uk/partners/>



How the School can help

Seven key topic areas



Sustainability



Management



Offsite



FIR



Lean Construction



Digital



Procurement

Enabling a more sustainable built environment



Variety of learning resources

Video based toolbox talks, 300 selected videos, 120+ e-learning modules

CPD Events & Workshops



Fairness, inclusion & Respect



E-Learning



Web Pages



Toolkits



Video Sustainability Shorts



Search our catalogue of **free** learning resources

What are you looking for?



COMPETENCY ▾

TOPIC ▾

SUBTOPIC ▾

MARKET ▾

FORMAT ▾

RATING ▾

All resources

Showing 12 of 119 results

TOPIC: SUSTAINABILITY ✕

ISSUE: BIODIVERSITY & ECOLOGY ✕



Biodiversity: An Introduction

Peter Johnson, Environmental Manager at Kier Group, talks ...



Biodiversity: A Client Example

How construction projects must consider biodiversity in ...



Biodiversity: A Contractor's View

Peter Johnson, Environmental Manager at Kier Group, talks ...



M&S' Greenest Store: Cheshire Oaks

Improved existing and created new habitats to encourage ...



Designing for Wildlife Passage

Designing for Wildlife Passage in an increasingly ...



Valuing Nature

An introduction to the 'Valuing Nature Programme'.



Natural Capital & Ecosystem Services

Video which provides an introduction to Natural Capital ...



Biodiversity in the built environment - VINCI

Biodiversity in the built environment - VINCI Facilities



Supply Chain Management in Wales - VINCI

Supply Chain Management in Wales - VINCI Facilities



Ecosystem Services

Video introducing and providing some basics on ecosystem ...



Put a value on Nature! TED Talk

Exploring the value of ecosystem services



What is Natural Capital and why is it so important

Video providing an introduction to Natural Capital from ...

Virtual Training & Meetings



What	Virtual Workshop	Lunch n Learn	Business Bytes	Leadership Groups
Length	3 hrs	30 mins- 1 hr	1.5-2 hrs	1.5-2 hrs
Attendee limit	16-24	500	500	N/A (<i>Group size</i>)
For	Interactive session with break out group and audience engagement	Build knowledge or learning on specific topics or School use	Host a multiple speaker presentation to engage on topics / strategies	Leadership Group or SIG meetings

Workshops

Choose from our workshop catalogue of **over 40 workshops** on topics covering all elements of the School

- *Fairness, Inclusion & Respect*
- *Carbon & Climate Change*
- *Offsite for Designers*
- *Circular Economy*
- *And many more....*

Workshop Catalogue 2020

All workshops in this catalogue are available virtually, in a modified, shortened format optimised for digital platforms.

Sustainability

Introduction to the School – This session will provide you with a closer look at how the School works, and how you as a business can take full advantage of its resources and features. You will get a chance to complete your self-assessment, create a bespoke action plan, and start to look at the resources recommended for your skill level.

Introduction to Sustainable Construction – The workshop will provide you with an introduction to sustainable construction, its development, the place of sustainability in the different stages of construction, social and environmental themes to be considered and factored-in to the construction process, different standards, the place of the contract and industry assessment schemes including examples of good practice.

Sustainability Strategy – This half day workshop is designed to help businesses to understand the steps they need to take to develop a sustainability strategy proportionate to their size and type of business. It is a short introduction to the subject matter and to the School.

Sustainable Procurement – This workshop is aimed at procurement professionals who already understand the key principles of Sustainable Procurement, may well have a sustainable procurement policy, but have not moved beyond this initial stage to fully embed sustainable procurement principles into their current procurement processes.

Transparency in Supply Chains – Whether it is understanding your carbon footprint, identifying issues of labour exploitation in your supply chain or just needing to understand the risks to your organisations operation through the threats to supply, transparency in supply chains has never been more important. This 3-hour workshop takes you through the principles of heatmapping, supply chain mapping and explores the potential strategies you can adopt to address the issues that are key to you and your organisation.

Integrating Responsible Sourcing into your sustainable procurement approach – This workshop will provide you with an overview of Responsible Sourcing, looking at the requirement that main contractors face of ensuring they are buying products or materials from a sustainable source, and the challenges that this raises for the supply chain. In addition to understanding the concept of Responsible Sourcing this workshop will look at the balance of Responsible Sourcing and Sustainable Procurement within organisations.

Meeting sustainability requirements in your clients' procurement processes – This workshop helps delegates understand how to best sell their sustainability credentials, providing them with top tips on how to win more business and better meet client sustainable procurement requirements.

Measuring & Managing Sustainability – This workshop will provide you with the knowledge and tools to help you to address the issue of measuring, reporting and managing sustainability of your projects.

E-learning library		<u>Sustainability</u>	<u>Offsite</u>	<u>Management</u>
Air Quality	Green Infrastructure	Social Value – Part 1	DfMA	Collaboration
BES 6001 for Responsible Sourcing	Heat Mapping (prioritise impacts)	Social Value – Part 2	Offsite Manufacturing	Leading Change
Building Management in FM	Introduction to Biodiversity	Sourcing Sustainable Labour	Design: Product & Process	Innovation
Business Case for Sustainable Construction	Introduction to CEEQUAL	Sourcing Sustainable Plant	Logistics – Part 1	Project Management
Carbon in Infrastructure	Introduction to Materials	Sustainability in FM	Logistics – Part 2	Get it Right First Time
Carbon Reporting	Introduction to Waste	Sustainability and Groundworks	Onsite Assembly	Quality
Carbon Management for SMEs	Introduction to Water	Sustainability in Food & Drink	Best in Class Maintenance	Supply Chain Management
Circular Economy	Labour Practises in FM	Sustainability on Site	Offsite Systems	Marketing & Business Development
Circular Economy - Indicators	Life Cycle Analysis	Sustainable Construction	Offsite Sectors	Risk Management in Infrastructure
Climate Change & Carbon	Local and SME Spend in FM	Sustainable Construction in Wales	Offsite for Designers	Behavioural safety in Infrastructure
Reduce Carbon, Reduce Costs	Modern Slavery	Sustainable Drainage Systems	Offsite for Project Managers	<u>Lean</u>
Economy & Community	The Modern Slavery Act	Sustainable Homes	Offsite for Cost Consultants	Introduction to Lean
Energy & Carbon Efficient Buildings	Responding to the Modern Slavery Act	Sustainable Procurement	Offsite for Site Management	Collaborative Planning
Engaging a Diverse Supply Chain	Overheating in Homes	Sustainable Timber	<u>Procurement</u>	5s
Environmental Management	Performance Gap	Supply Chain Mapping & Modern Slavery	Procurement for SMEs	7 Wastes
Ethical Business (competitive advantage through)	Performance Measurement	Wellbeing for Future Generations Act, Wales	Cost & Value Based Procurement 1	Value Stream Mapping
Ethical Business – the basics	Plastic Waste		Cost & Value Based Procurement 2	Visual Management
Getting Value out of your EMS	Responsible Waste Mgmnt in FM		Managing Performance through Procurement	Lean: Train the Trainer
			Supplier Relationship Mgt	<u>Digital</u>
<u>Fairness, Inclusion & Respect</u>			Collaborative Procurement 1	Introduction to BIM
Business case for FIR	Flexible working	Understanding Race & Culture 1	Collaborative Procurement 2	Cyber Security
FIR on Site: Why it matters	Invisible disabilities	Understanding Race & Culture 2	Collaborative Procurement 3	Digital Strategy
Recruiting, fairly and inclusively	Leading People Inclusively	FIR: Train the Trainer		Digital Investment
Setting up an inclusive site	Managing Challenging Conversations			Digital through Project Lifecycle

24 Sustainability Shorts



Energy management efficiency - Sustainability Short

Featuring Zap the Energy Sap.



Waste Management - Sustainability Short

A short animation about how to reduce waste



Modern Slavery - Sustainability Short

Explains how any individual on site can help identify ...



Sustainability At Work - Sustainability Short

An introduction to sustainability for office and support ...



Environmental Management in FM - Sustainability Short

A quick look at the key things to consider



Science Based Targets - Sustainability Short

You can't manage what you don't measure



Sustainability Strategy - Sustainability Short

How to develop your own and why



FIR Toolbox Talk: Mental Health and Wellbeing

Everyone experiences mental health; tips for maintaining ...



FIR Toolbox Talk: FIR Induction

Fairness, Inclusion and Respect can be an integral part ...



FIR Toolbox Talk: Language

This Toolbox Talk discusses language that is and is not ...



FIR Toolbox Talk: Respect

Behaviour on site that treats everyone with respect



FIR Toolbox Talk: Responsibilities

What responsibility employers have to employees, and vice ...



FIR Toolbox Talk: Wellbeing

Fairness, Inclusion and Respect (FIR) - Wellbeing toolbox ...



Waste in FM: a Toolbox Talk

Discusses the issue of waste in the FM sector.



Community Liaison - Managing Conflict: a Toolbox Talk

Daily issues faced when dealing with the wider ...



Water: a Toolbox Talk

Why water is a significant issue for the construction ...



Air Quality: a Toolbox Talk

What factors can affect air quality, and how poor air ...



Biodiversity: a Toolbox Talk

An introduction to the important issues involved with ...

“Topic specific” self-enrol Learning Pathways

- 📍 Sustainability: An Introduction
- 📍 Sustainable Procurement - Level 1
- 📍 Sustainable Procurement - Level 2
- 📍 Sustainable Procurement - Level 3
- 📍 Sustainable Procurement - Level 4
- 📍 Sustainable Procurement - Level 5
- 📍 Procurement for Beginners
- 📍 Procurement for Practitioners
- 📍 Introduction to Climate Change & Carbon
- 📍 Carbon Reporting
- 📍 Carbon in Procurement
- 📍 Net Zero Carbon & Offsetting
- 📍 Offsite Fundamentals
- 📍 Introduction to Lean Construction
- 📍 Sustainable FM – Level 2
- 📍 Modern Slavery: An Introduction
- 📍 Modern Slavery: Due Diligence
- 📍 Modern Slavery: Site Materials
- 📍 FIR Ambassador
- 📍 Waste and Resource Efficiency - An Introduction
- 📍 Waste and Resource Efficiency for FM - An Introduction
- 📍 Waste, Resource Efficiency & Circular Economy In Scotland: Part 1
- 📍 Waste, Resource Efficiency & Circular Economy in Scotland: Part 2
- 📍 Social Value: Defining and Delivering
- 📍 Social Value: What is it and Why is it Important?
- 📍 Wellbeing: An Introduction – 2021
- 📍 Wellbeing & The Built Environment - 2021



63%

reduced carbon emissions

39%

agree the School helped achieve this



57%

reduced waste

41%

agree the School helped achieve this



69%

increased modern slavery understanding

65%

agree the School helped achieve this



68%

increased understanding of FIR

68%

agree the School helped achieve this



38%

increased community engagement

48% agree the School helped achieve this



44%

increased understanding of responsible sourcing

66% agree the School helped achieve this



38%

increased apprentice numbers

22% agree the School helped achieve this



44%

improved air quality

40% agree the School helped achieve this



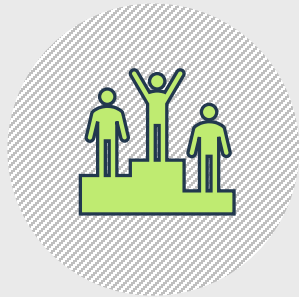
37%

reduced water consumption

33% agree the School helped achieve this



50%
reduced costs



47%
win new business



61%
more collaborative

School impact on business performance



72%
better understanding of sustainability



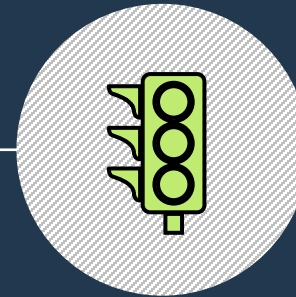
35%
retained talent



58%
better relationships with suppliers



41%
improved quality of bids




55%
reduced reputational risks



Personal dashboard

Individuals can use the School for their own professional development, and export reports to show resources viewed / CPD time accrued.

Home About ▾ Learn ▾ Markets ▾ Topics ▾ Partners ▾ Contact ▾ EVENTS

[View my profile](#)


Emily McBride
[Take me to my company dashboard](#)

 3 Badges  5 Certificates

Personal assessments

Complete your confidential individual assessment, track your score, and generate your bespoke action plan.

Assessment topic	Score	5.00	ASSESS NOW
Sustainability <small>Last</small>	2.56	Baseline	
<small>assessed: 12.07.2018</small>	Current		

Personal action plan

View your action plan of resources based on your most recent assessment results.

0	2	ACTION PLAN
Personal	Allocated	

My activity

06:47:00	04:32:00
Total time	CPD time

Action plans created	3
----------------------	---

Resources accessed	48
<small>Last accessed 10.09.2019</small>	

My events

1	4
Registered	Attended

[VIEW EVENTS](#)

Resources

The School has thousands of resources that are free at the point of use.

[BROWSE RESOURCES](#)

History

- Assessments
- Action plan
- Resources

Company dashboard

Each supplier company who becomes a member gets their own sustainability dashboard to track progress and action plans. All colleagues with the corporate email domain will be grouped into the company account

The dashboard is titled "Action Sustainability" and features a navigation sidebar on the left with sections: Administration, Reporting, Charts, Our people, Priority suppliers, Targets, and History. The main content area includes:

- Action Sustainability Profile:** Shows a BB logo, 7 Badges, and links to "View company profile" and "Take me to my personal dashboard".
- Level:** A circular progress indicator for the "SCHOOL" level, with a "Download your badge" button. Status expires on 2022-03-22.
- Progress:** A donut chart showing "100% on your way to gold". To maintain Gold, users need to complete a re-assessment within 12 months and complete 10 resources in the past 6 months.
- Company assessments:** A section for completing confidential assessments. The current assessment topic is "Procurement" (last assessed: 2021-09-17). The user's score is 3.79 (Current) and the baseline is 3.93. An "ASSESS NOW" button is present.
- Industry benchmark:** A radar chart comparing the user's score (blue) against the school average (green) and sector average (orange) across various categories: Value creation, Business Model, Collaboration, Collaborative procurement models, Contract award, Develop strategy, Form of contract, Innovation, Leadership, Market analysis, Supplier development, Supplier performance, Supplier relationship, and Supplier selection.
- Company action plan:** A section to view the action plan of resources based on the most recent assessment results, with an "ACTION PLAN" button.
- Our activity:** A table showing 2773 hrs 12 mins total time and 1250 hrs 49 mins CPD time. It also shows 67 action plans created and 3123 unique resources viewed.
- Our events:** A table showing 215 attended, 347 registered, and 62 non-attendance events.
- Our Learning Pathways:** A section to view activities assigned to partners, with buttons for "ENROLLED PATHWAYS" and "VIEW AVAILABLE PATHWAYS".



How do I become
a Member?

Go to the School website: www.supplychainschool.co.uk

The screenshot shows the website's navigation bar with the SCHOL logo and menu items: Home, About, Learn, Markets, Topics, Partners, and Contact. On the right, there are icons for 'EVENTS', 'LOG IN', and 'SIGN UP'. The 'LOG IN' and 'SIGN UP' buttons are highlighted with a red box. Below the navigation bar, the 'Create account' section is visible, featuring a heading and three paragraphs of text. The registration form includes fields for Email address, Password, Password (again), Firstname, Surname, City/town, Region (a dropdown menu), and Mobile number. Each field is marked with a red asterisk. A password strength requirement is noted below the password fields: 'The password must have at least 8 characters, at least 1 digit(s), at least 1 lower case letter(s), at least 1 upper case letter(s), at least 1 non-alphanumeric character(s) such as *, -, or #'.

SUPPLY CHAIN SUSTAINABILITY SCHOL Home About Learn Markets Topics Partners Contact

EVENTS LOG IN SIGN UP

Create account

Membership to the School and the use of all resources, e-learning modules and attendance of workshops is completely free of charge, all we ask is that you register with us so we can recommend the most appropriate learning.

We will not share your details to any 3rd parties without your permission.

We will use your email domain name to match you to colleagues in your company who are already registered. If you are not matched to an existing account it means your company has not yet registered with the School.

Email address *

Enter your company email address

Password *

The password must have at least 8 characters, at least 1 digit(s), at least 1 lower case letter(s), at least 1 upper case letter(s), at least 1 non-alphanumeric character(s) such as *, -, or #

Password (again) *

Firstname *

Surname *

City/town *

Region * Choose ▾

Mobile number



In focus:
The Plant Group



World Class, Collaborative Learning

The School is a collaboration between clients, contractors and first tier suppliers who want to build the skills of their supply chains.

[OUR PARTNERS](#)

SUPPLY CHAIN SUSTAINABILITY SCHOL

Search our catalogue of free learning resources

Search All Learning



[ASSESS NOW](#)



[RESOURCES FOR YOU](#)

Our members love learning with us

Why the Supply Chain Sustainability School works

[ABOUT US](#)



We Share

We share knowledge and resources and our direction is led by our Partners and members.



We Deliver

We deliver measurable impact through dynamic leadership.



We Inspire

We inspire our members and Partners to drive positive change.



We Exemplify

We exemplify respect for the planet, our colleagues and wider society.



FREE Workshops

We offer free learning opportunities to build skills to deliver a sustainable built environment.



Individual Learning

Our learning is tailored to individual companies to ensure best practice in all fields.

World Class, Collaborative Learning

The School is a collaboration between clients, contractors and first tier suppliers who want to build the skills of their supply chains.

Plant Group

Ensuring your plant and fleet are efficient and effective.

Search our catalogue of FREE training resources

Search All Learning



Best practice sustainable procurement within the plant category

The Plant category group was established by School Partners and other key industry stakeholders to develop and facilitate the implementation of the School's position on best practice sustainable procurement within the

With increasing scrutiny from clients and the government on the negative effect engines have on the air quality of our towns and cities, and with policy and penalties pushing organisations to address the issues through fleet and plant, the industry needs to look closely at how it operates plant, what it invests in, and how plant is disposed.

As a result of these challenges, Partners are collaborating to identify and provide the supply chain with information and guidance on plant standards and management.

The definition of "plant" for this group is "plant used in the construction and/or

RESOURCES IN THE SCHOOL

SUPPLY CHAIN SUSTAINABILITY
SCHOL
Home About Learn Markets Topics

air quality

Air Quality - Sustainability Short

VIDEO

★★★★★ 224 RATINGS

In this short animated video, we will explain what factors can affect air quality, and how poor air quality can impact our health. We will finish off by exploring ways to improve air quality on site.

BEGINNER 10 mins

LEARN MORE >

All resources for "air quality"
Showing 9 of 9 results

VIDEO x E-LEARNING MODULE x

Air Quality for plant and equipment
Air Quality - Sustainability Short
Plant, Equipment and Air Quality at WP Group
Plant, Equipment and Air Quality at Skanska

SUPPLY CHAIN SUSTAINABILITY
SCHOL
Home About Learn Markets Topics

plant

Sourcing Sustainable Plant For Your Construction Projects

E-LEARNING MODULE

★★★★★ 12 RATINGS

In this module, we will discuss the common environmental impacts associated with plant, and how best to mitigate them when sourcing for your construction project.

BEGINNER 15 mins

LEARN MORE >

Sustainability considerations associated with the procurement/hiring of plant.

All resources for "plant"
Showing 5 of 5 results

E-LEARNING MODULE x

Air Quality for plant and equipment
Sustainability and Groundworks
Sourcing Sustainable Plant For Your Construction Projects
Delivering Cost & Value in your Plant and Material Procurement

Sustainability and Groundworks
Issues Groundworks contractors should be aware of ...

Sourcing Sustainable Plant For Your Construction Projects
Plant: sourcing sustainable plant for construction projects

Delivering Cost & Value in your Plant and Material Procurement
This module investigates the stages of the procurement ...

SUPPLY CHAIN SUSTAINABILITY
SCHOL
Home About Learn Markets Topics

Air Quality for plant and equipment

AIR QUALITY

Air Quality for plant and equipment

E-LEARNING MODULE

★★★★★ 16 RATINGS

This module will give you an introduction to the sustainability issues associated with air quality for plant and equipment and non-road mobile machinery

INTERMEDIATE 30 mins

LEARN MORE >

All resources for "air quality"
Showing 9 of 9 results

VIDEO x E-LEARNING MODULE x

Air Quality for plant and equipment
Air Quality - Sustainability Short
Plant, Equipment and Air Quality at WP Group
Plant, Equipment and Air Quality at Skanska

Air Quality for plant and equipment
Learn about the air quality issues associated with ...

Sustainability and Groundworks
Issues Groundworks contractors should be aware of ...

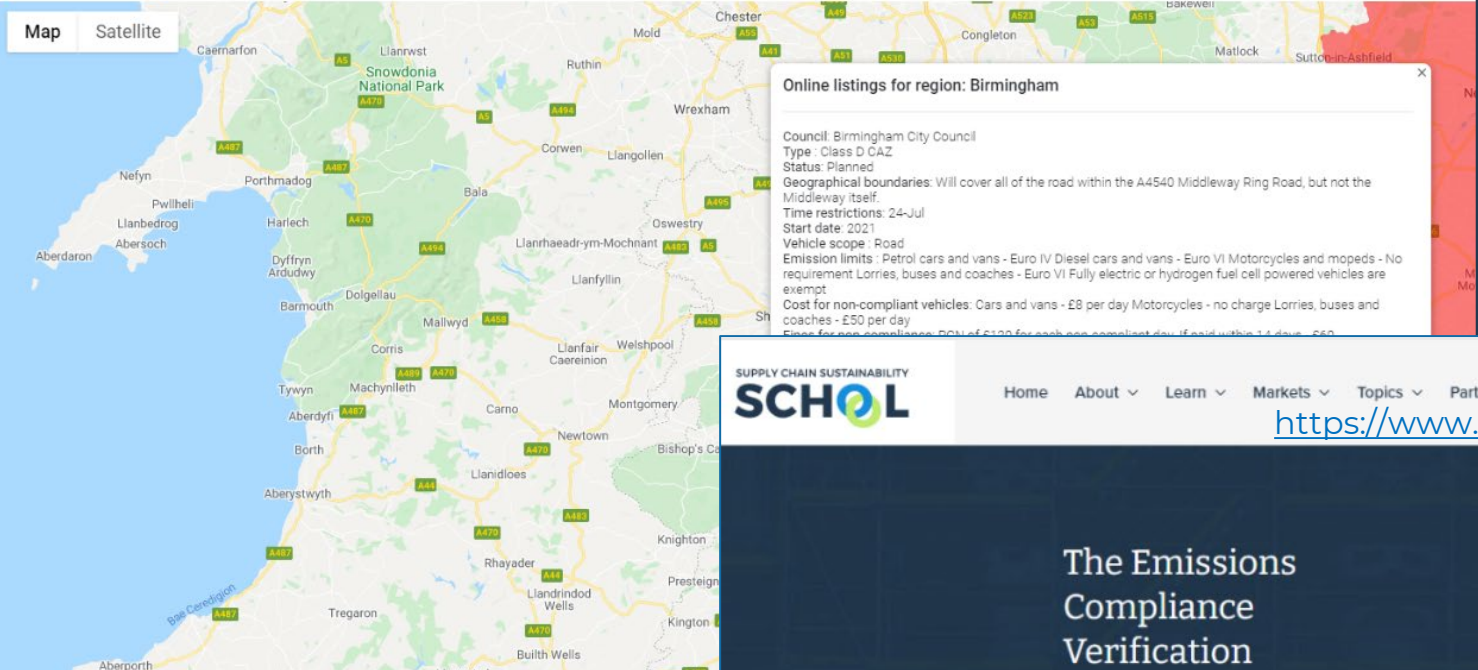
Plant: sourcing sustainable plant for construction projects

This module investigates the stages of the procurement ...

The Plant Category Group established the need to know which UK Councils and regions have Clean Air Zones (CAZ) or Low Emissions Zones (LEZ), or are planning them. This map provides detailed information on Air and Low Emission Zones are either active or planned to be active and have had a written statement by a leading body (e.g. Council website page).

Action Sustainability and the Supply Chain Sustainability School are not rating, scoring, providing opinion or assessing the Clean Air Zones displayed. All the information provided is from information found on the Council website page.

Advanced Search: >



RESOURCES IN THE SCHOOL

The Emissions Compliance Verification Scheme

The [Emissions Compliance Verification Scheme](#), provided by [CESAR](#), gives users of non-road mobile machinery (NRMM) a clear and easy way of identifying the engine emissions levels of their equipment. Using a colour-coded, visible sticker, applied to the machine at point of manufacture, the user can quickly see what emission Stage their machinery is, which helps with site and project compliance with air quality demands.



ENGAGEMENT & DISCUSSION



Home About ▾ Learn ▾ Markets ▾ Topics ▾ Partners ▾ Contact ▾

Plant, Equipment and Air Quality at Flannery



2019



2020



Kevin Wyche

University of Brighton



Andrea Charlson

Sustainability Manager

2021



Serena Ward

Environmental Advisor

SCS Railways



Tom Holland

HS2 Account Director

Sunbelt Rentals



Christian Spence

Sustainable Energy
Manager

Sunbelt Rentals



Nigel Blandin

Managing Director

4 Group

The Signatories

By signing this Charter, we demonstrate our intent to work and collaborate towards achieving the five commitments contained herein, both within our own organisation and within our supply chain.



If you are interested in signing the Charter, please contact james@supplychainschool.co.uk.



Our commitment

Signatories to this Charter come from across the value chain and commit to reducing the quality and greenhouse emissions and the negative impacts they cause from their plant and equipment (CPE) that we, as an industry, buy, hire, and use.

We will do this by adhering to the following commitments. They apply to anyone in our supply chain, from client through contractors and hire companies, out to subcontractors.

- **Minimum standards in procurement:** We will buy or hire CPE to the minimum standards for AQ and GHG emissions, as laid out in the latest version of accompanying paper³.
- **Engagement:** We will engage suppliers and contractors up and down the value chain to actively participate in meeting the same minimum standards to contribute to our aims.
- **Awareness raising and education:** We commit to providing our supply chain with the skills, knowledge and confidence they need to achieve our aims.
- **Measurement and reporting:** We will measure progress in reducing our emissions and report them to relevant stakeholders.
- **Innovation:** We will investigate, trial and implement new technologies to reduce emissions on the route to zero emissions onsite.





In focus:
The Climate
Action Group

Climate Action Group

Carbon Calculator

Version 2.0



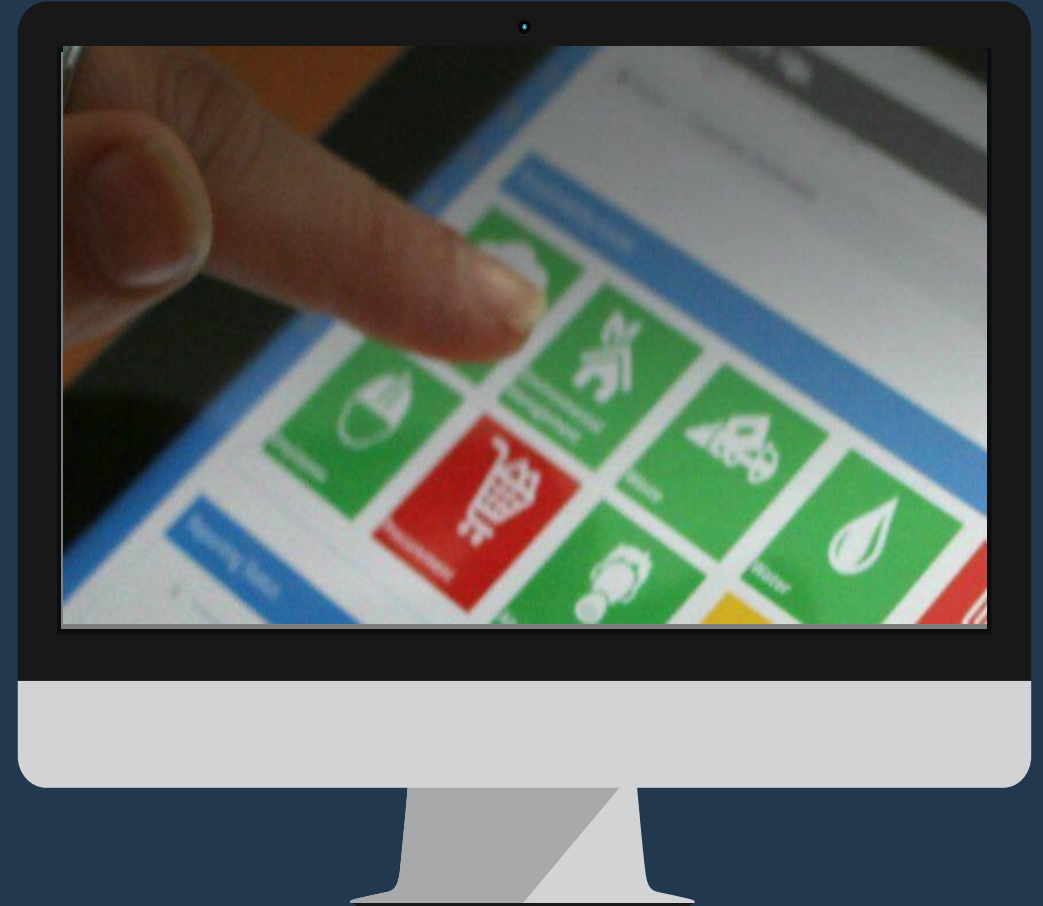
Carbon Calculator

FREE Online platform designed to manage supply chains and carbon data

Identify key carbon producing activities and start to work on how these can be managed



Launched: August 2021



Improved Functionality



Carbon Calculator

Functionality to **calculate carbon emissions** based on the activity data provided by supplier organizations



Apportionment

Functionality to enable suppliers to **distribute** a percentage of their carbon **emissions based on revenue**.



Types of Report

- a) Simplified report** for organizations who already know their carbon footprint and would like to move straight onto the apportionment section
- b) Full report** to help organizations calculate their carbon footprint and apportion emissions among their clients



Frequency of reporting

Monthly, quarterly and annually. Annual reporting is the minimum requirement.



Data visualization

- a) Suppliers:** organization's carbon footprint by scope and source of emissions
- b) School Partners:** carbon data apportioned by suppliers by scope and source of emissions

The screenshot displays the SCHOL website interface with a grid of event cards. A central card is highlighted with a red box around the date and time information.

Website Header: SUPPLY CHAIN SUSTAINABILITY SCHOL. Navigation: Home, About, Learn, Markets, Topics. User options: LOG IN, SIGN UP.

Event Grid:

- Value Lunch 'n' Learn:** Measuring & Managing Sustainability Performance... Monday, 15 November 2021, 12:00 PM - 1:00 PM.
- Workshop (Initiate):** A 3-hour interactive workshop to build your understanding... Tuesday, 16 November 2021, 9:30 AM - 12:30 PM.
- FIR Way: Workshop:** A 4.5-hour interactive workshop to discuss inclusive... Wednesday, 17 November 2021, 9:30 AM - 2:00 PM.
- Lunch 'n' Learn:** The construction economy is recovering swiftly from the... Wednesday, 17 November 2021, 1:15 PM - 2:15 PM.
- The Importance of Due Diligence in the Procurement Process: Webinar:** This 1 hour webinar will provide an overview of supplier... Friday, 19 November 2021, 11:00 AM - 12:00 PM.
- Measuring & managing sustainability performance:** Measuring & managing sustainability performance... Monday, 22 November 2021, 10:00 AM - 11:30 AM.
- Carbon Calculator for Suppliers - Lunch 'n' Learn:** A 1-hour introductory demo of the Carbon Calculator aimed at SUPPLIER organisations. **Wednesday, 24 November 2021, 3:00 PM - 4:00 PM**. **BEGINNER** 60 mins.
- Demystifying BIM – Lunch 'n' Learn:** A 1-hour Lunch 'n' Learn to answer your burning questions... Wednesday, 24 November 2021, 4:00 PM - 5:00 PM.
- Offsite for Quantity Surveyors and Cost Consultants Workshop:** Join us for this 3-hour workshop to understand how to... (Date not fully visible).
- Circular Economy - Workshop:** A 3-hour workshop facilitated by Mark Turner, Senior... Tuesday, 30 November 2021, 9:30 AM - 12:30 PM.
- Offsite and MMC Procurement – Lunch 'n' Learn:** A 1-hour Lunch 'n' Learn to understand how the new DMA... (Date not fully visible).
- Achieving Value through Materials Procurement - workshop:** This 3-hour workshop has been designed to help... (Date not fully visible).
- Added Value through Collaborative Procurement:** This 1 hour webinar will provide an overview of... (Date not fully visible).
- Delivering Social Value with Keepmoat Lunch 'n' Learn:** A case study lunch 'n' learn with Keepmoat... Thursday, 2 December 2021, 2:00 PM - 3:00 PM.

Questions?

Thank you



James Cadman



0207 697 1977



james@supplychainschool.co.uk



supplychainschool.co.uk